



# BRAMSHOTT & LIPHOOK NEIGHBOURHOOD DEVELOPMENT PLAN



<https://bramshottandliphookndp.uk>



[admin@bramshottandliphookndp.uk](mailto:admin@bramshottandliphookndp.uk)

Search: Bramshott Liphook NDP



## AGENDA

- Vision
- Legal Framework
- Delivering Our NDP (PLAN)
- Evidence Based Research
- Developing Neighbourhoods
- NDP Benefits
- Potential Site Allocations
- Policies

- Holistic

PC Meeting 28th March 2022  
APM - 30th March 2022  
EHDC/SDNP Meeting 8th April 2022

Kevin Wyeth - Chair BLNDP





# BRAMSHOTT & LIPHOOK NEIGHBOURHOOD DEVELOPMENT PLAN

Status / Vision



**Caution**

**The NDP and this presentation is DRAFT.  
“Nothing is agreed until everything is agreed at the Community Referendum”.  
(currently planned for May 2023)**

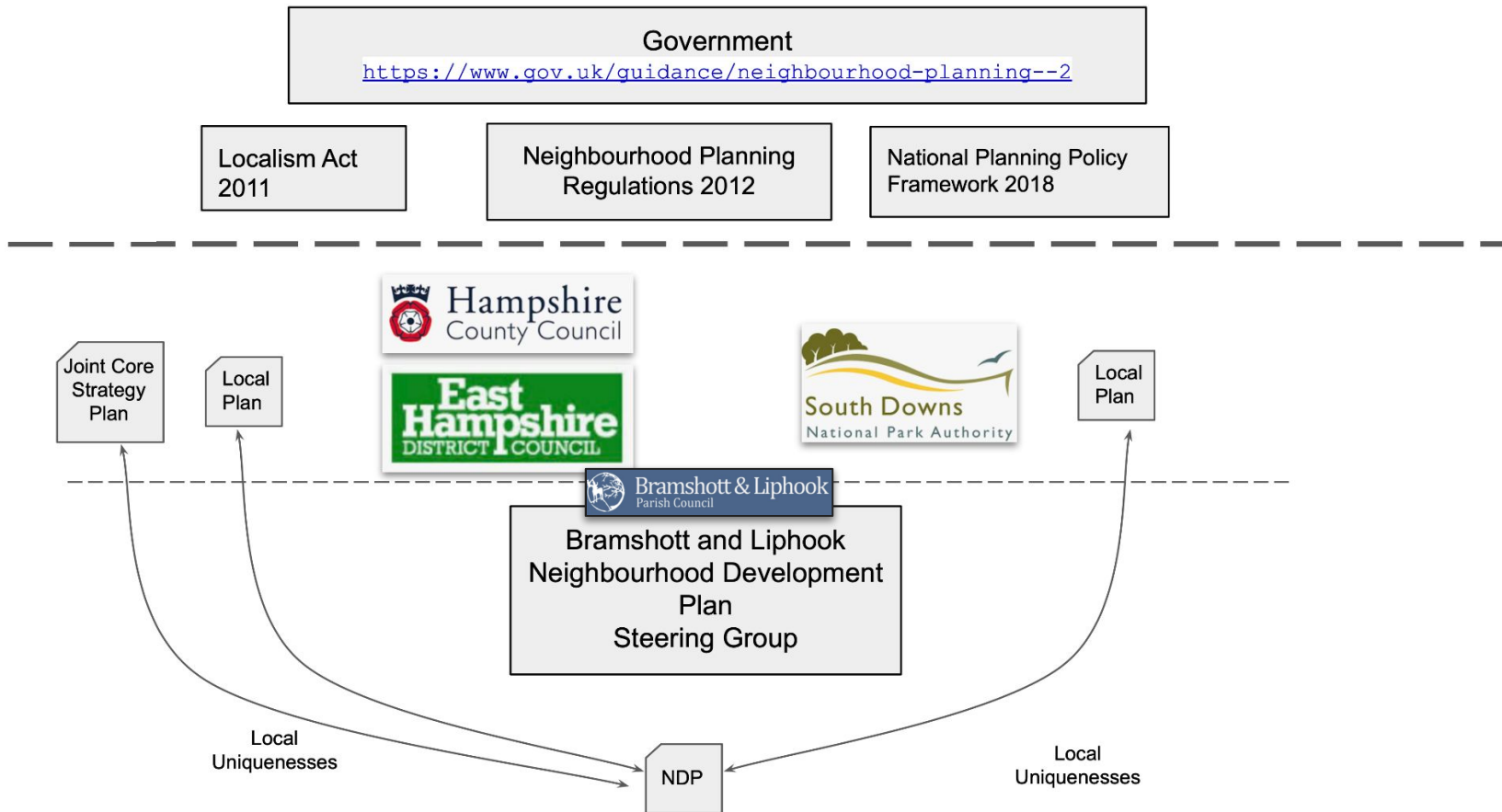
## **Our Vision -**

***To deliver a Neighbourhood Development Plan that enhances the future safety, social, economic and environmental well-being of the Parish whilst retaining our village heritage through design.***



# BRAMSHOTT & LIPHOOK NEIGHBOURHOOD DEVELOPMENT PLAN

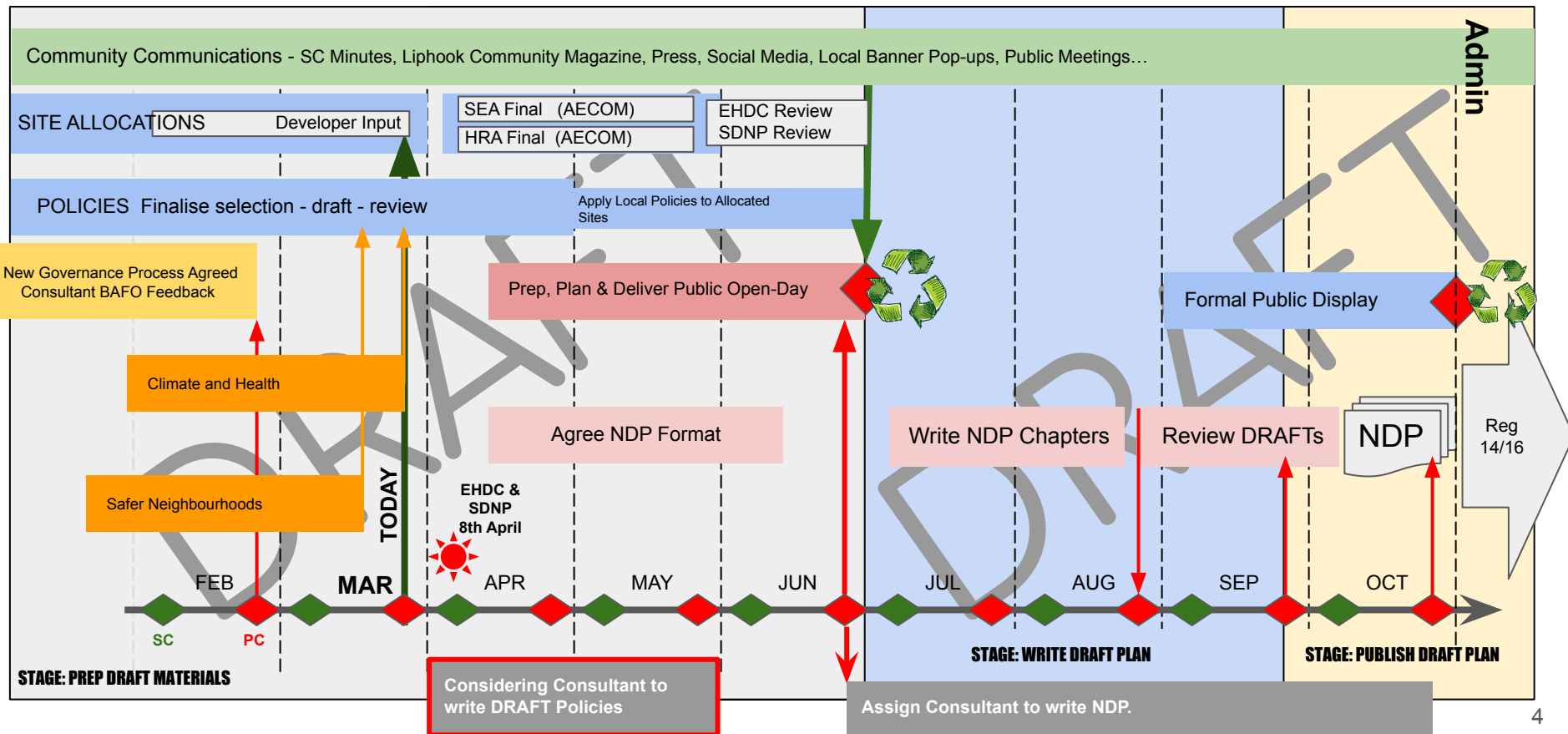
## Legal Frameworks





# BRAMSHOTT & LIPHOOK NEIGHBOURHOOD DEVELOPMENT PLAN - TODAY

## Delivery Plan 2022

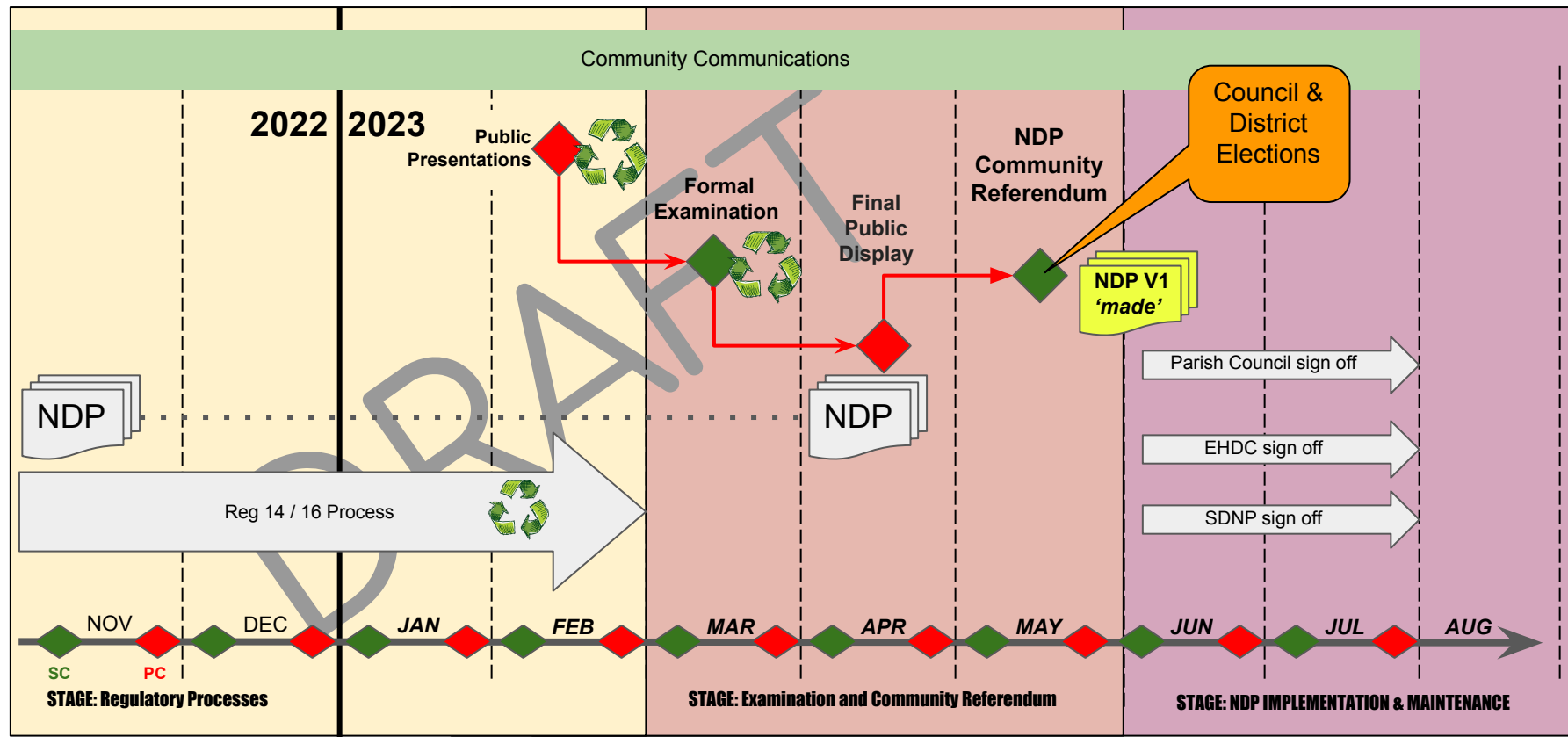






# BRAMSHOTT & LIPHOOK NEIGHBOURHOOD DEVELOPMENT PLAN

Delivery Plan 2022/23

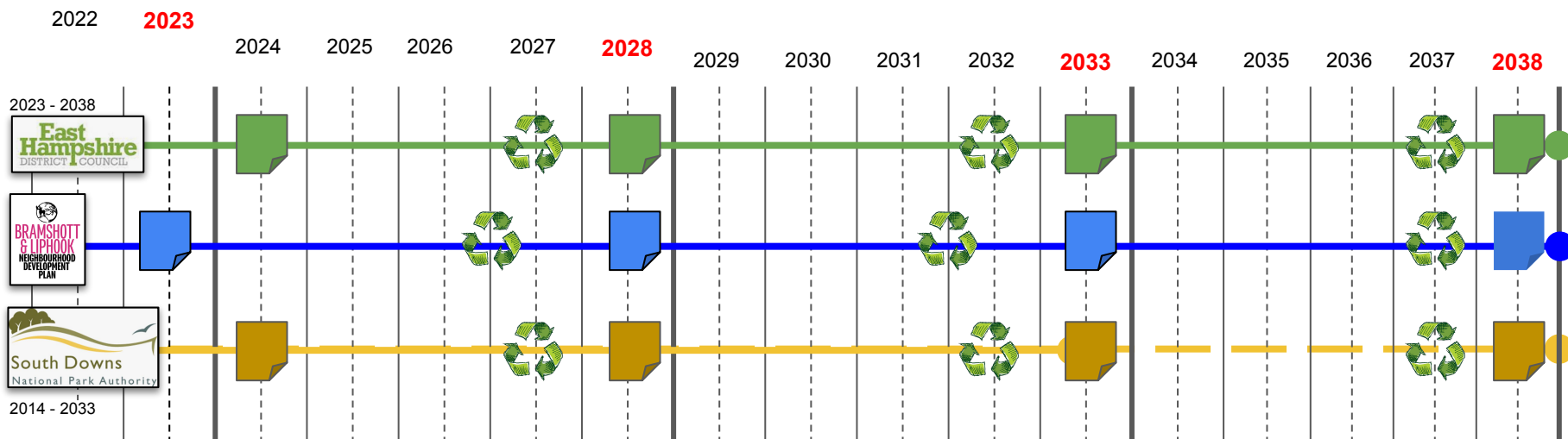






# BRAMSHOTT & LIPHOOK NEIGHBOURHOOD DEVELOPMENT PLAN - TODAY

NDP Aligning with SDNP & EDHC Local Plans  
With 5 Year Review Cycles





# BRAMSHOTT & LIPHOOK NEIGHBOURHOOD DEVELOPMENT PLAN

## Evidence Based Research and Recommendations

100s Public Consultation Hours &  
100s of Meetings 2017/18 - 2022



March 2018

Bramshott & Liphook Neighbourhood  
Development Plan

Interim Report



**ATKINS**  
Member of the SNC-Lavalin Group

### Liphook Phase II Transport Feasibility Study

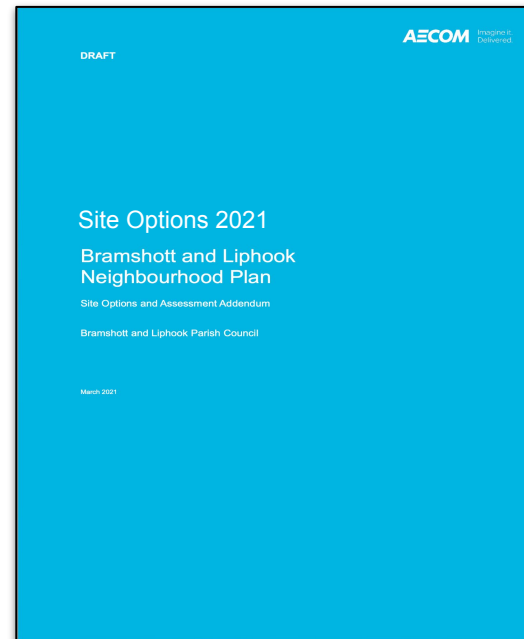
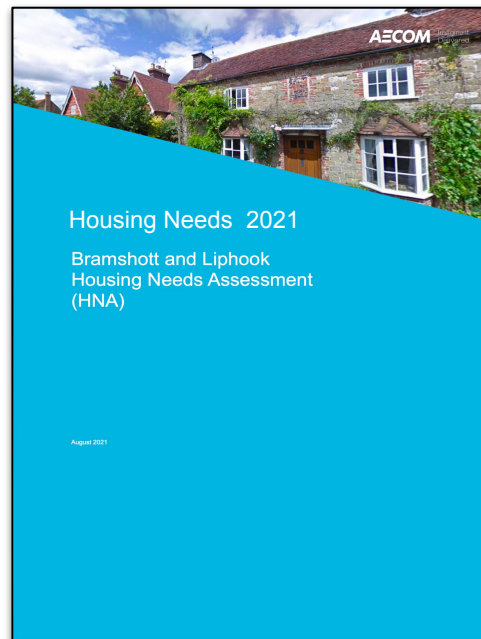
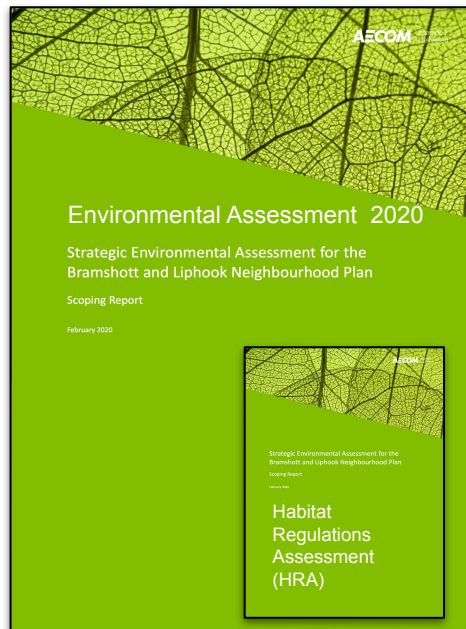
Transport Feasibility Study  
Hampshire County Council

July 2018



# BRAMSHOTT & LIPHOOK NEIGHBOURHOOD DEVELOPMENT PLAN

## Evidence Based Research and Recommendations



<https://bramshottandliphookndp.uk/wp-content/uploads/2019/04/Bramshott-Liphook-NP-SEA-Scoping-Report-200316-1.pdf>

<https://bramshottandliphookndp.uk/wp-content/uploads/2019/04/Bramshott-HNA-Final.pdf>

<https://bramshottandliphookndp.uk/wp-content/uploads/2019/04/200731-Bramshott-and-Liphook-Neighbourhood-Plan-Site-Assessment-Final-Report-amended.pdf>



# BRAMSHOTT & LIPHOOK NEIGHBOURHOOD DEVELOPMENT PLAN

## Evidence Based Research and Policies

**East Hampshire**  
DISTRICT COUNCIL

A-Z Make a payment MyEHDC Contact us **SPEAK**

Site search (keywords or phrases)

Advertising

Planning services • Planning policy • Local Plan • Adopted Local Plan

### Local Plan second review 2006

The Local Plan second review was adopted at the end of March 2006 and remains part of the Development Plan.

- [Chapter 1 - Planning background](#) (pdf 568 kb)
- [Chapter 2 - General strategy](#) (pdf 318 kb)
- [Chapter 3 - Countryside and heritage](#) (pdf 285 kb)
- [Chapter 4 - Transport, energy and pollution](#) (pdf 146 kb)
- [Chapter 5 - Housing](#) (pdf 398 kb)
- [Chapter 6 - Economy](#) (pdf 251 kb)
- [Chapter 7 - Health and community](#) (pdf 238 kb)
- [Chapter 8 - Putting the plan into effect](#) (pdf 1.9 mb)

The following document shows in summary the policies that are remaining from the Second Review:

- [Remaining Local Plan: Second Review policies](#) (pdf 75 kb)

Share this page

Newsletters and service updates

[Sign up today for the latest council news](#)

**South Downs**  
National Park Authority

## SOUTH DOWNS LOCAL PLAN

ADOPTED 2 JULY 2019 (2014-33)

SOUTH DOWNS  
NATIONAL PARK



### East Hampshire District Local Plan: Joint Core Strategy

Adopted June 2014

**East Hampshire**  
DISTRICT COUNCIL

**South Downs**  
National Park Authority

Working in Partnership



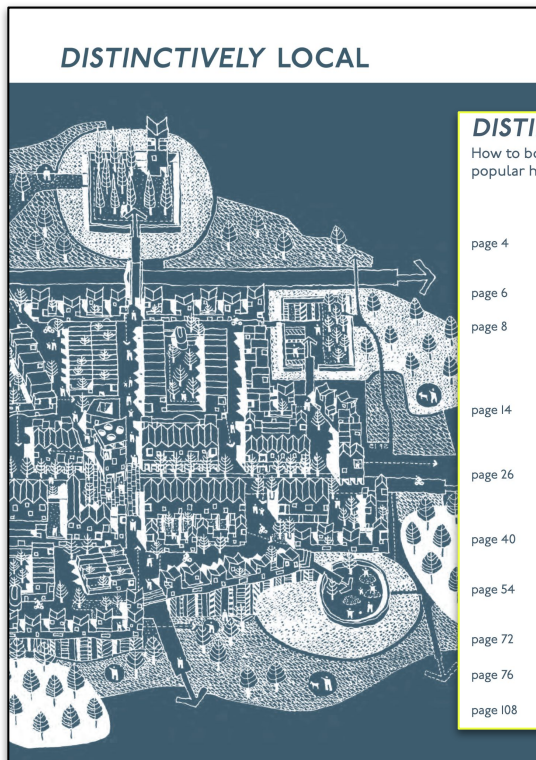


# BRAMSHOTT & LIPHOOK NEIGHBOURHOOD DEVELOPMENT PLAN

## Developing our Neighbourhood

<http://www.distinctively-local.co.uk/storage/app/media/Distinctively-Local-Fnal-Report.pdf>

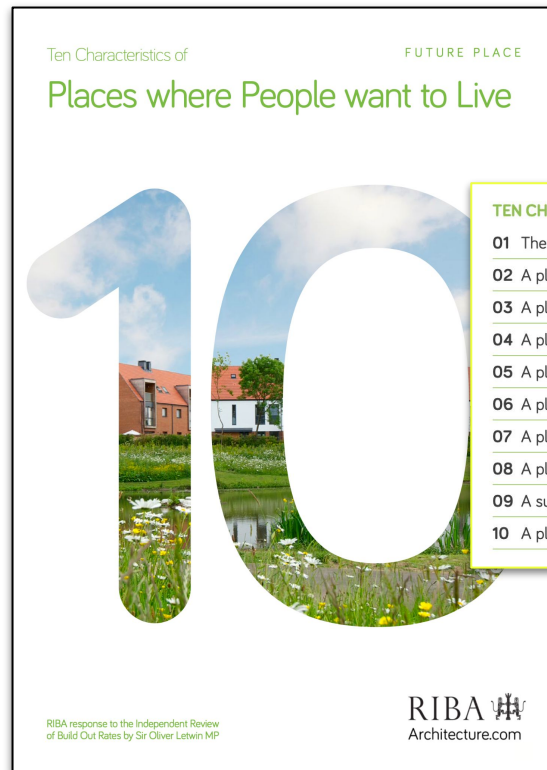
<https://www.architecture.com/knowledge-and-resources/resources-landing-page/ten-characteristics-of-places-where-people-want-to-live>



### **DISTINCTIVELY LOCAL**

How to boost supply by creating beautiful and popular homes and places

page 4	<b>FOREWORD</b> Lord Taylor of Goss Moor
page 6	<b>INTRODUCTION</b>
page 8	<b>MORE, BETTER, FASTER</b> Local distinctiveness and the challenge to build more homes
	<b>THEMES</b>
page 14	<b>Distillation of place</b> Creating places which respond to their context
page 26	<b>Living streets</b> Designing people-friendly streets and open spaces
page 40	<b>Iconography of home</b> Crafting modern houses which feel like home
page 54	<b>Harmonious diversity</b> The power of choice
page 72	<b>DISTINCTIVELY LOCAL IN SUMMARY</b>
page 76	<b>CASE STUDIES</b>
page 108	<b>ABOUT THE AUTHORS</b>



Ten Characteristics of

FUTURE PLACE

## Places where People want to Live

### **TEN CHARACTERISTICS**

- 01** The right place for the right housing
- 02** A place to start and a place to stay
- 03** A place which fosters a sense of belonging
- 04** A place to live in nature
- 05** A place to enjoy and be proud of
- 06** A place with a choice of homes
- 07** A place with unique and lasting appeal
- 08** A place where people feel at home
- 09** A sustainable place for future generations
- 10** A place where people thrive

RIBA response to the Independent Review  
of Build Out Rates by Sir Oliver Letwin MP

**RIBA**   
Architecture.com



# BRAMSHOTT & LIPHOOK NEIGHBOURHOOD DEVELOPMENT PLAN

## Community Benefits

- **Heritage:** Maintain our heritage through holistic design
- **Maximize Land Availability:** Best use of sites within existing settlement boundaries.
- **Climate Enhancements:** Improving green infrastructure; increased site net biodiversity gains; provide new green corridors linking to existing green spaces
- **Sports & Recreation:** Improving sports and recreation facilities; community health and wellbeing, opportunities to promote more activity & reduced travel
- **Tourism:** Increase tourism opportunities with community & SDNP benefits.
- **Market Housing:** Opportunity to influence the size, type and quality of housing as well as meeting the needs of an ageing population in suitable locations
- **Affordable Housing:** Opportunity to develop affordable housing for local residents - not just rented social housing but also part rent/buy, self-build, starter homes etc.
- **Financial:** Additional (£) CIL contributions to fund more local community and infrastructure projects.

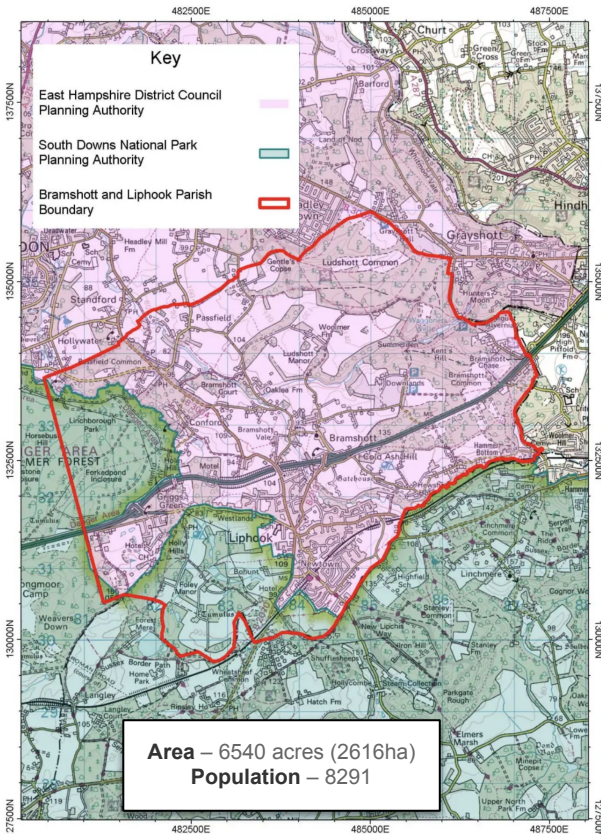






# BRAMSHOTT & LIPHOOK NEIGHBOURHOOD DEVELOPMENT PLAN

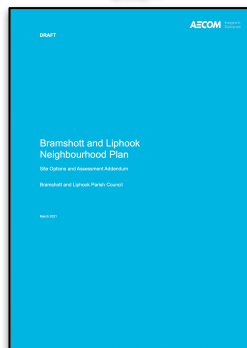
Bramshott and Liphook Neighbourhood Plan Designation Order Map



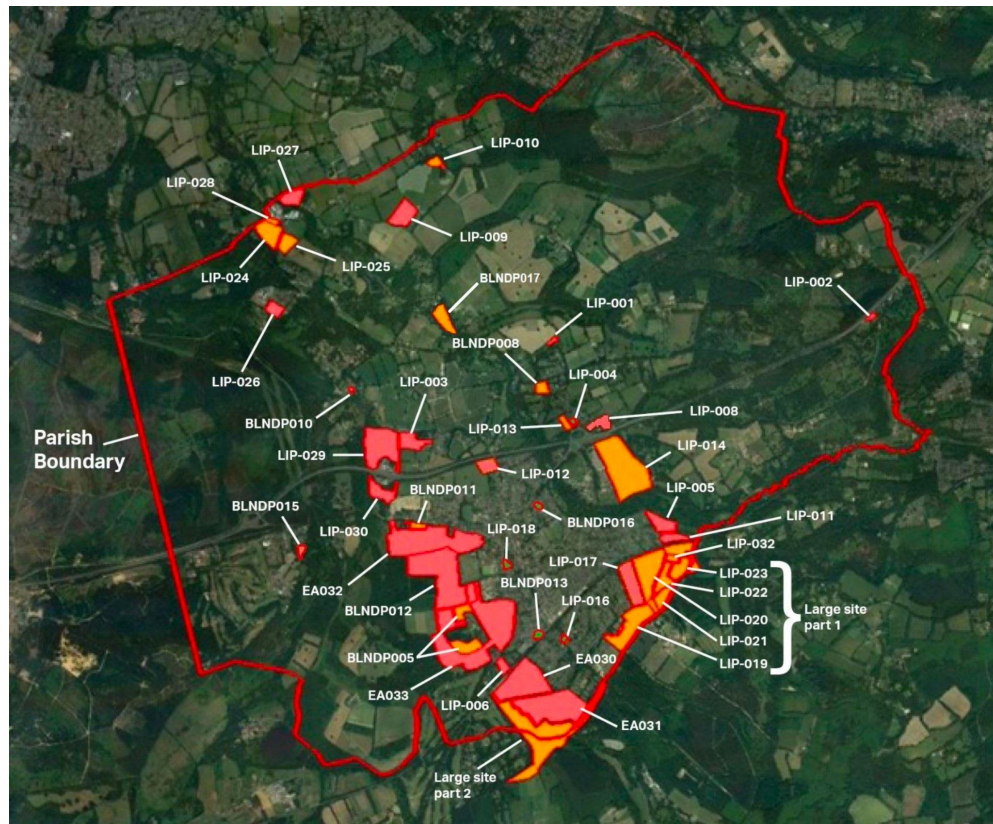
Call for sites  
2019



Site Options  
2021



Call For Sites - Initially **45 Sites**.



**BRAMSHOTT & LIPHOOK ELECTIONS 2021 - SITE ASSESSMENT MATRIX**

**SITE ASSESSMENT MATRIX - FULL ASSESSMENT (2021)**

The following table provides a detailed assessment of the sites identified in the Bramshott & Liphook Elected Area. The table is divided into two main sections: 'Sites with Potential for Development' and 'Sites with No Potential for Development'. The 'Sites with Potential for Development' section is further divided into 'Sites with Potential for Development - Residential' and 'Sites with Potential for Development - Commercial/Industrial'. The 'Sites with No Potential for Development' section is further divided into 'Sites with No Potential for Development - Residential' and 'Sites with No Potential for Development - Commercial/Industrial'. The table includes columns for Site Name, Site Address, Site Size, Site Type, Site Status, Site Notes, and Site Assessment. The table is a comprehensive list of sites in the area, with detailed information on each site's characteristics and potential for development.

<https://bramshottandliphookndp.uk/wp-content/uploads/2019/04/Site-Assessment-Matrix-2021-12-30-Issued-RevA-FULL.pdf>

Through Covid months - using



45 Sites x 37 Policy Statements  
= 1,665 Policy Tests



11 NDP Sites + EHDC/SDNP  
Sites

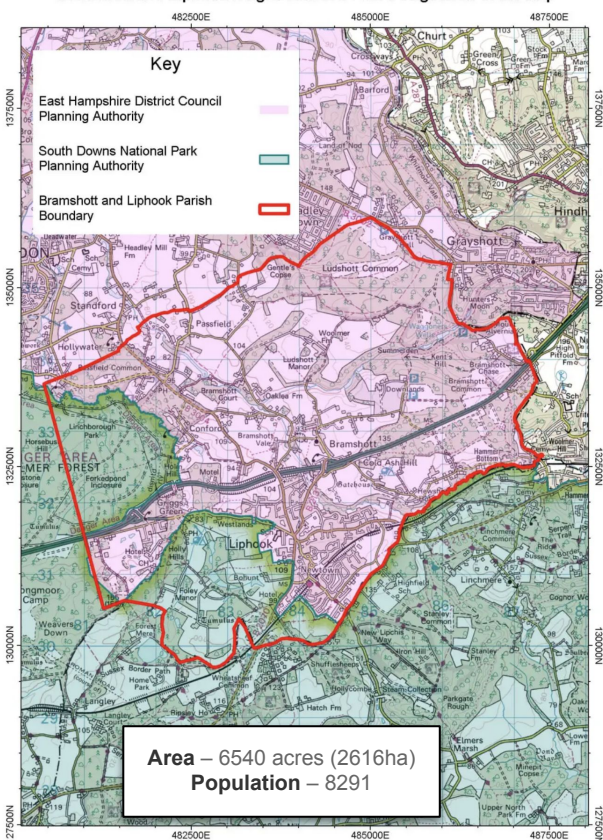
- 1 Withdrawn  
- 1 Permission Granted





# BRAMSHOTT & LIPHOOK NEIGHBOURHOOD DEVELOPMENT PLAN

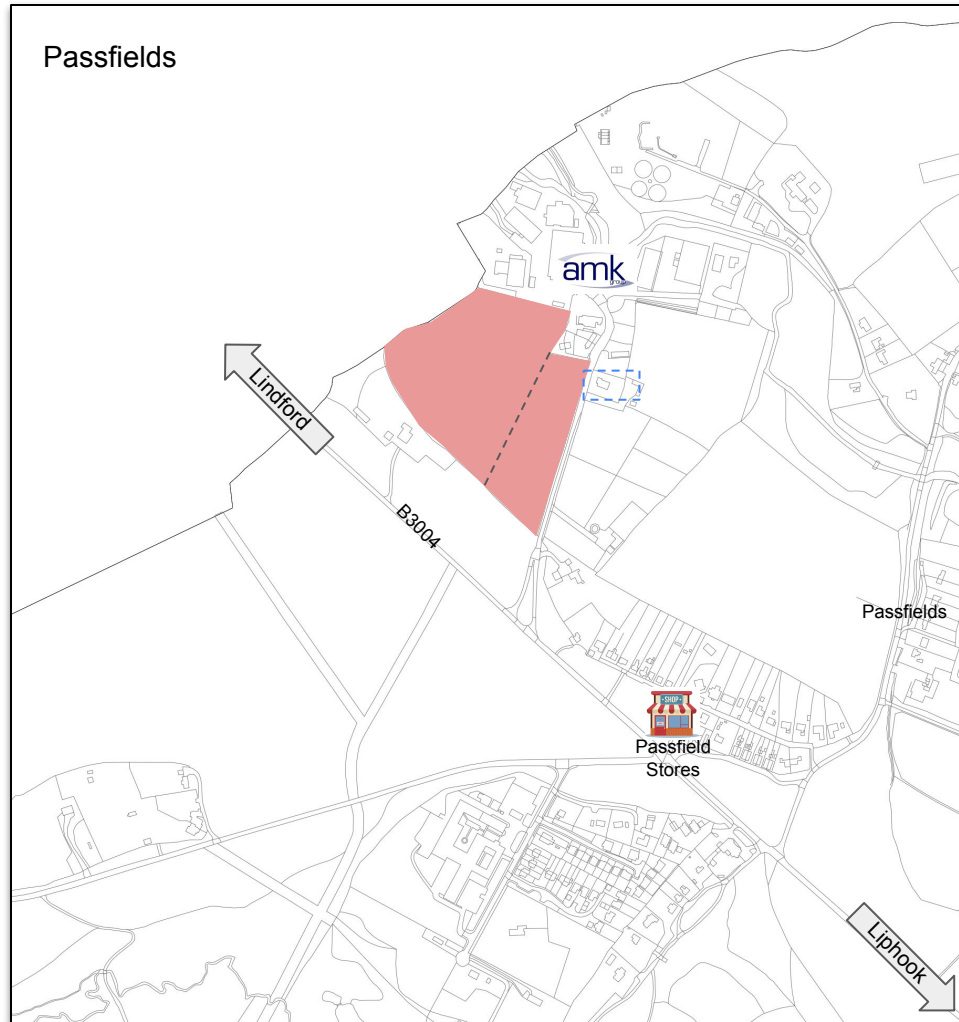
Bramshott and Liphook Neighbourhood Plan Designation Order Map



Potential Sites Allocations - Reduced to **11 + EHDC / SDNP Sites.**



## Passfields



### EHDC Local Plan - 2038

- 175 new homes
- Affordable Housing

### EHDC In Planning

- 10 new homes (Metis)
- 40 Retirement Flats (Mc)
- Cinema

### SDNP Concept

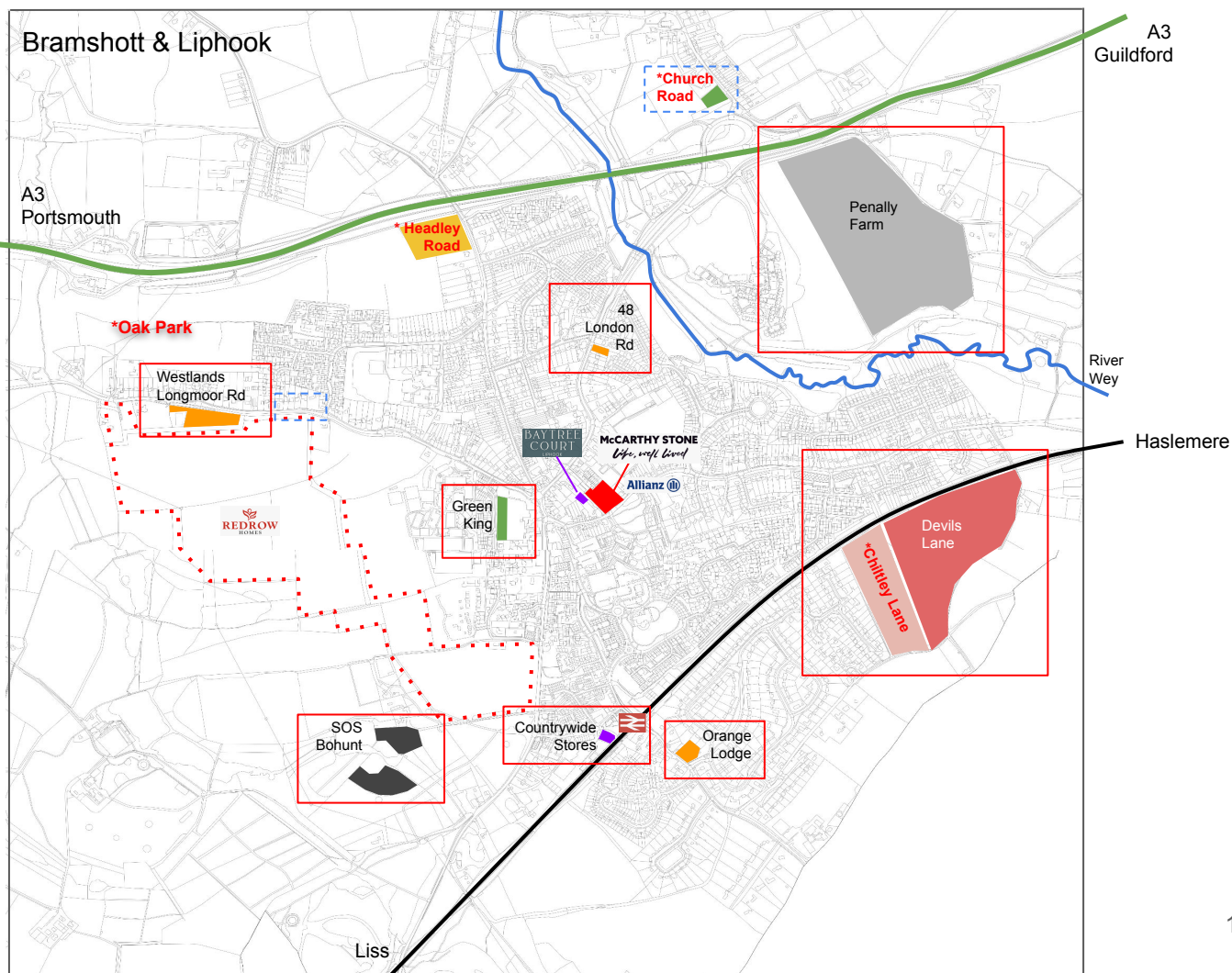
- 650 new homes +

### Westlands Park

<https://liphook-vision.com/>

### NDP Potentially

- 450 new homes
- 5 Self Builds
- 15 Business / Retail
- 1 Care Home
- Affordable Housing
- Infrastructure Upgrades
- Green Public Spaces





# BRAMSHOTT & LIPHOOK NEIGHBOURHOOD DEVELOPMENT PLAN

## Policies in DEVELOPMENT

### Housing (AECOM)

- H1 40% Affordable Housing - Prioritising Local Residence
- H2 Size and Type of Housing Required
- H3 Specialist Housing for Older and Disabled People
- H4 New Environmental Friendly Housing

### Climate & Health (WP)

- A. Use Passive House Standard
- B. Renewable Energy Solutions
- C. Min rear Garden Space 100m<sup>2</sup>
- D. Cycle Spaces
- E. Electric Car Charging
- F. Home Working Space
- G. Green Roofing
- H. Waste & Recycling
- I. Soft landscape – native trees
- J. Evidence 10% biodiversity net gain

### Safer Neighbourhoods (WP)

- A. Site Designed to CPTED Standards
- B. Implement Natural Surveillance Design
- C. Implement Access Control Solutions
- D. Implement Territorial Reinforcement
- E. Implement Space Management Solutions



# BRAMSHOTT & LIPHOOK NEIGHBOURHOOD DEVELOPMENT PLAN

## Policies in DEVELOPMENT

### **Climate & Health (WP)**

- A. Use Passive House Standard
- B. Renewable Energy Solutions
- C. Min rear Garden Space 100m<sup>2</sup>
- D. Cycle Spaces
- E. Electric Car Charging
- F. Home Working Space
- G. Green Roofing
- H. Waste & Recycling
- I. Soft landscape – native trees
- J. Evidence 10% biodiversity net gain

### **Heritage & Design (DropBox)**

- HD1 Enhancing Parish Conservation Areas
- HD2 Enhancing Shop Frontages and Designs
- HD3 Standardise All Signs & Furniture
- HD4 Promoting Parish Heritage





# BRAMSHOTT & LIPHOOK NEIGHBOURHOOD DEVELOPMENT PLAN

## Policies in DEVELOPMENT

### **Public Services** (DropBox)

- PS1 Improving Healthcare
- PS2 Improving Education Facilities
- PS3 Sustainable Infrastructure & Flood Protection
- PS4 Demonstrably Improving Parish Eco Environment

### **Climate & Health (WP)**

- A. Improve Air Quality
- B. Evidence 10% biodiversity net gain

### **Safer Neighbourhoods (WP)**

- A. Site Designed to CPTED Standards
- B. Implement Natural Surveillance Design
- C. Implement Access Control Solutions
- D. Implement Territorial Reinforcement
- E. Implement Space Management Solutions





# BRAMSHOTT & LIPHOOK NEIGHBOURHOOD DEVELOPMENT PLAN

## Policies in DEVELOPMENT

### **Access & Movement (AECOM)**

- AM1 Enhance Parish Travelling
- AM2 Promote Eco Friendly Transport
- AM3. Support Enhanced Public Transport Services

### **Employment (DropBox)**

- EMP1 Enhance Local Employment
- EMP2 Combine Living & Working
- EMP3 Enhance Links Between Work & Education

### **Climate & Health (WP)**

- A. Enhance Walking & Cycling Infrastructure
- B. Enhance Green Corridors
- C. Enhance Local Walking/Cycling Routes
- D. Enhance Public Transport Links
- E. Evidence 10% biodiversity net gain

### **Safer Neighbourhoods (WP)**

- A. Site Designed to CPTED Standards
- B. Implement Natural Surveillance Design
- C. Implement Access Control Solutions
- D. Implement Territorial Reinforcement
- E. Implement Space Management Solutions



# BRAMSHOTT & LIPHOOK NEIGHBOURHOOD DEVELOPMENT PLAN

## Policies in DEVELOPMENT

### **Sports & Recreation (AECOM)**

- SR1 Enhance Sports Facilities
- SR2 Expand Green Spaces
- SR3 Enhance Biodiversity
- SR4 Expand & Enhance Facility Quality
- SR5 Promote South Downs National Park

### **Community (AECOM)**

- CR1 Improve Retail Facilities
- CR2 Enhance Accessibility
- CR3 Manage Residential Growth & Visitors

### **Climate & Health (WP)**

- A. Enhance Green Space & Parks Access
- B. Improve Recreational infrastructure
- C. Evidence 10% biodiversity net gain

### **Safer Neighbourhoods (WP)**

- A. Site Designed to CPTED Standards
- B. Implement Natural Surveillance Design
- C. Implement Access Control Solutions
- D. Implement Territorial Reinforcement
- E. Implement Space Management Solutions



## BRAMSHOTT & LIPHOOK NEIGHBOURHOOD DEVELOPMENT PLAN



Next Steps

- SDNP/EHDC Meeting 8th April
- NDP **SC** 12th April
  - Responding to EHDC/SDNP Meeting
  - Plan Public Open Day
  - Policies
- **PC** Meeting 25th April
- Monthly NDP Surgeries (by appointment only)



# BRAMSHOTT & LIPHOOK NEIGHBOURHOOD DEVELOPMENT PLAN



## BRAMSHOTT & LIPHOOK NEIGHBOURHOOD DEVELOPMENT PLAN



<https://bramshottandliphookndp.uk>



[admin@bramshottandliphookndp.uk](mailto:admin@bramshottandliphookndp.uk)

Search: Bramshott Liphook NDP

