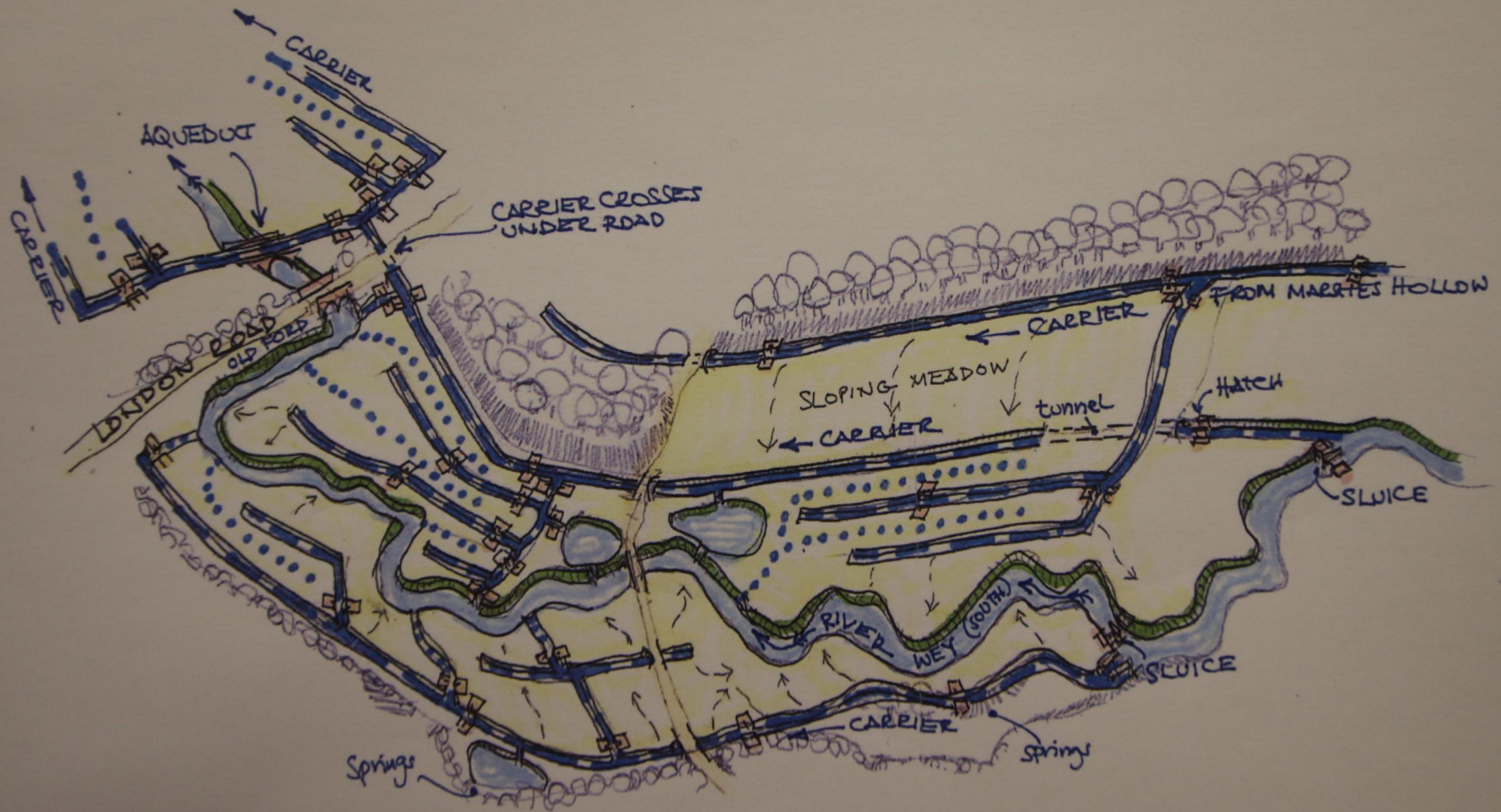


RADFORD PARK



The Shipwrights Way

SECTION 5: LIPHOOK TO LISS

Follow these signs
along the route!



Route to Bordon

Sculpture:
helmet
SU778288

Sculpture:
trout
SU779281

LISS

Rail stn



www.shipwrights.org.uk

SECTION 5: LIPHOOK TO LISS

How far? This section is just over 7 miles long; you can return along the same route or other rights of way or use the train! It forms a spur off the main route of the Shipwrights Way (which runs from Bordon direct to Liss) but is highly recommended as there is some lovely scenery and a good variety of heathland, pine woods and sunken lanes.

What will I see? The section starts at Liphook railway station and soon leaves the road (at the Links Tavern) to travel along the edge of Liphook golf course and through the Foley Estate, past the equestrian statue of Lord Strathnairn and beautiful lakes with swans and water lilies. This leads to a woodland track, emerging briefly at the Deers Hut Public House at Griggs Green (look out for the sculpture here) before turning southwards along another track, gently rising to a high point with views ranging from the Surrey Hills to the north and South Downs to the south. The sandy track continues downhill along the edge of some beautiful heathland managed by the MOD and then through pines, crossing the line of the Chichester-Silchester Roman Road to reach some small country lanes at a bridge over the rail line. These lanes lead through to the top of a disused military railway, now a substantial path with bespoke oak bridges and two more sculptures, winding through mature trees alongside the River Rother and emerging right in the centre of Liss.



Who can use it?

This section is open to walkers (and dogs), cyclists and horse-riders, and provides a fair to good route for pushchairs and mobility vehicles. Horse-riders may wish to avoid the centre of Liphook and Liss, and an alternative route for the latter is suggested overleaf.

What is the path like?

Most of this section is off-road, on undulating tracks which are variously sandy, earthen, stone or tarmaced; the sections just before and after Weavers Down may be muddy after prolonged rain. There are three bridlegates, which each open to around 5ft width. The section starts briefly on roads with pavements and is later on rural lane (without pavements) for a further 2 miles.

What facilities are available? This section starts at Liphook, a small town with the full range of facilities you would expect (cafes/pubs, loos, shops and parking). Around two miles from Liphook is the Deers Hut pub, which offers refreshments and meals. The end point for this section is the village of Liss, which offers cafes/pubs, shops and car parking. Both Liphook and Liss have rail stations and the journey between them is only 6 minutes, departing approximately hourly in either direction.



What is the Shipwrights Way?

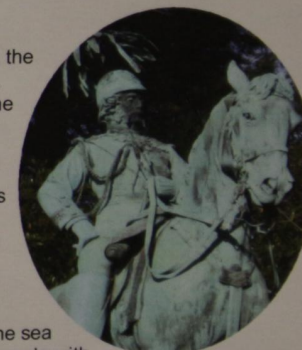
It is a long-distance route linking villages and towns in east Hampshire through some beautiful countryside. Starting at Alice Holt Forest near Farnham, it runs down across the South Downs to the sea at Portsmouth. The route is open to walkers and cyclists and, where possible, horse-riders and people with disabilities.

Why 'Shipwrights'?

The name reflects the journey of oak grown at Alice Holt to dockyards such as Portsmouth for medieval shipbuilding; the route finishes at Portsmouth Historic Dockyard, home of the Mary Rose, HMS Victory and the International Boatbuilding Training College.

Who provided the route?

It was provided through a partnership between East Hampshire District Council, Hampshire County Council, the Forestry Commission and the South Downs National Park Authority.



East Hampshire
DISTRICT COUNCIL

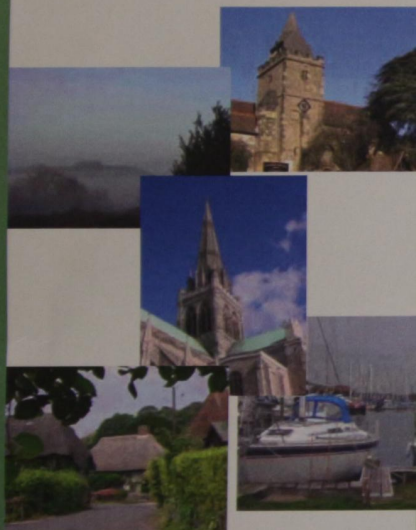
Forestry Commission
England

Hampshire
County Council

South Downs
National Park Authority

Contact: countryside@hants.gov.uk 0300 555 1391
www.shipwrights.org.uk

New Lipchis Way



*"exploring West Sussex
from head to toe in all its
natural beauty"*

A 39 mile waymarked walk
from Liphook to East Head

Welcome to the New Lipchis Way

This delightful walking trail follows existing rights of way over its 39 mile/62.4 kilometre route from Liphook, on the Hampshire/West Sussex border, to East Head at the entrance to Chichester Harbour through the heart of the South Downs National Park..

Being aligned north-south, it crosses all the main geologies of West Sussex from the greensand ridges, through Wealden river valleys and heathlands, to the high chalk downland and the coastal plain. In so doing it offers a great variety of scenery, flora and fauna.

The trail logo reflects this by depicting the South Downs, the River Rother and Chichester Harbour.

It can be walked energetically in three days, bearing in mind that the total 'climb' is around 650 metres/2,000 feet. The maps divide it into six sections, which although unequal in distance, break the route into stages that allow the possible use of public transport.

There is a good choice of accommodation and restaurants in Liphook, Midhurst and Chichester, elsewhere there is a smattering of pubs and B&Bs – although the northern section is a little sparse in that respect.

You will need two Ordnance Survey Explorer maps to cover the route; numbers 120 & 133: the trail is clearly shown on both. In addition there are some written route notes where things become a little tricky – illustrated on our maps by the symbol:

And to enjoy your journey to the full please do remember the Countryside Code :

- Be safe, plan ahead and follow any signs.
- Leave gates and property as you find them.
- Protect plants and animals and take your litter home.
- Keep dogs under close control.
- Consider other people.

Also:

- Take nothing away but photographs and memories.
- Leave nothing but your shallow footprints.



Footprints of Sussex
Pear Tree Cottage, Jarvis Lane,
Steyning, West Sussex BN44 3GL

Logo design – West Sussex County Council
Printed by – Wests Printing Works Ltd., Steyning, West Sussex
Designed by – integritydesignandprint@hotmail.co.uk

© 2012 Footprints of Sussex

